

# The alcohol screening day in Catalonia: beyond the identification of alcohol- related problems

## INEBRIA-LATINA

Joan Colom, Jorge Palacio-Vieira, Lidia Segura Garcia, Estela Diaz, Rosa Freixedas, Nuria Bastida, Antoni Gual

Thursday, 27th September



# Introduction

- Drink-less project dissemination started in 2002 resulting in increased early identification of alcohol-related problems in Catalonia.

- Risky drinkers at Primary Care (PC) remain under-detected [Segura L, 2006].

- Screening tools not adequate
- Only low risky drinkers screened

- Raising awareness among professionals and general population is, together with training and support, an essential part of the activities carried out in the framework of the Drink-Less project (Beveu Menys) in Catalonia.

The screenshot shows the website for 'Beveu Menys', a project of the Department of Health of Catalonia. The page features several sections:

- Novetats del programa Beveu Menys:** Announces the 'III Jornada de la Ità ROH' (III Day of the Italian ROH) on October 11th, 12th, and 13th, 2012, at the '9a Conferència de la Plaça de la Universitat de Barcelona'.
- Publicacions d'interès:** Lists several publications, including 'L'alcohol a la Unió Europea. El consum, el dany i el cost patològic', 'Oferta Especial que Cura de la OMS. Conseqüències, 2012', and 'La població i l'alcohol: una perspectiva actualitzada a partir del consum i el dany patològic i social'. It also mentions 'Camfic' and 'AIFICC'.
- líniverda:** Promotes the 'Campanya de Prevenció de Consum d'alcohol en el ciutadà de primària'.
- Primeres:** Mentions 'El consum d'alcohol i el dany patològic i social' and 'El consum d'alcohol i el dany patològic i social'.
- Articles d'interès:** Mentions 'Pla de treball de prevenció de consum d'alcohol'.

The poster features a large glass of beer with a small figure of a person standing next to it. The text reads:

programa [beveu menys]

**Veus el que Beus?**

Generalitat de Catalunya  
Agència de Salut Pública de Catalunya

camfic AIFICC

# Objective



- Raising awareness campaign inspired by the National Alcohol Screening Day of United States [Greenfield SF, 1999]

## Aimed at:

- Encouraging the use of standardized instruments
- Improving early detection of risky drinkers at PC
- Raising awareness among the general population regarding alcohol problems.

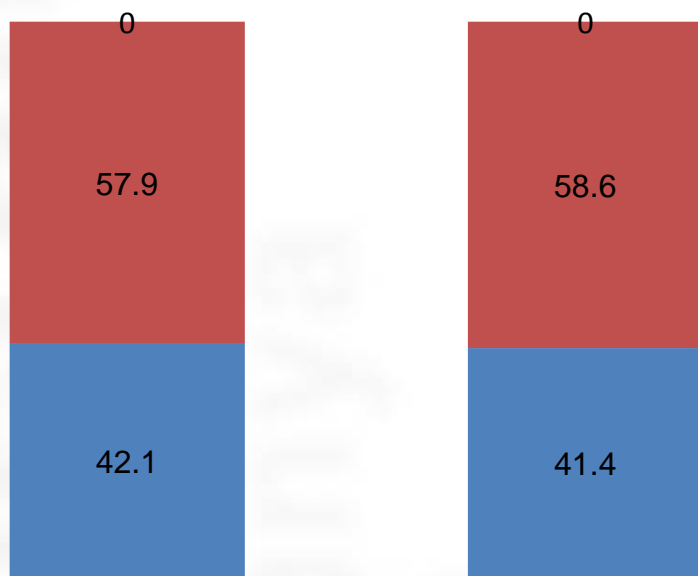
# Methods

- All referents of alcohol in Catalonia were invited to participate voluntarily (562 professionals of 365 centres of Primary Care ).
- 2 consecutive years (2010 & 2011) around the 15<sup>th</sup> of November (“el día sin alcohol”).
- Identification (AUDIT-C paper or electronic) + leaflet
- **Risk of alcohol consumption (cut-points)**
  - Men: **Risk $\geq$ 5**
  - Women: **Risk $\geq$ 4**



# Characteristics of participating centres

■ Rural ■ Urban ■ Unknown

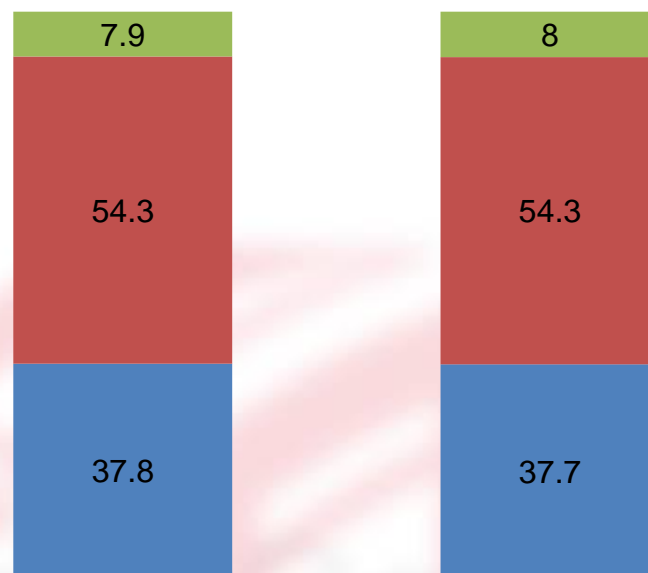


2010

2011

**Participating centres**

■ Rural ■ Urban ■ Unknown



2010

2011

**Non-participating centres**

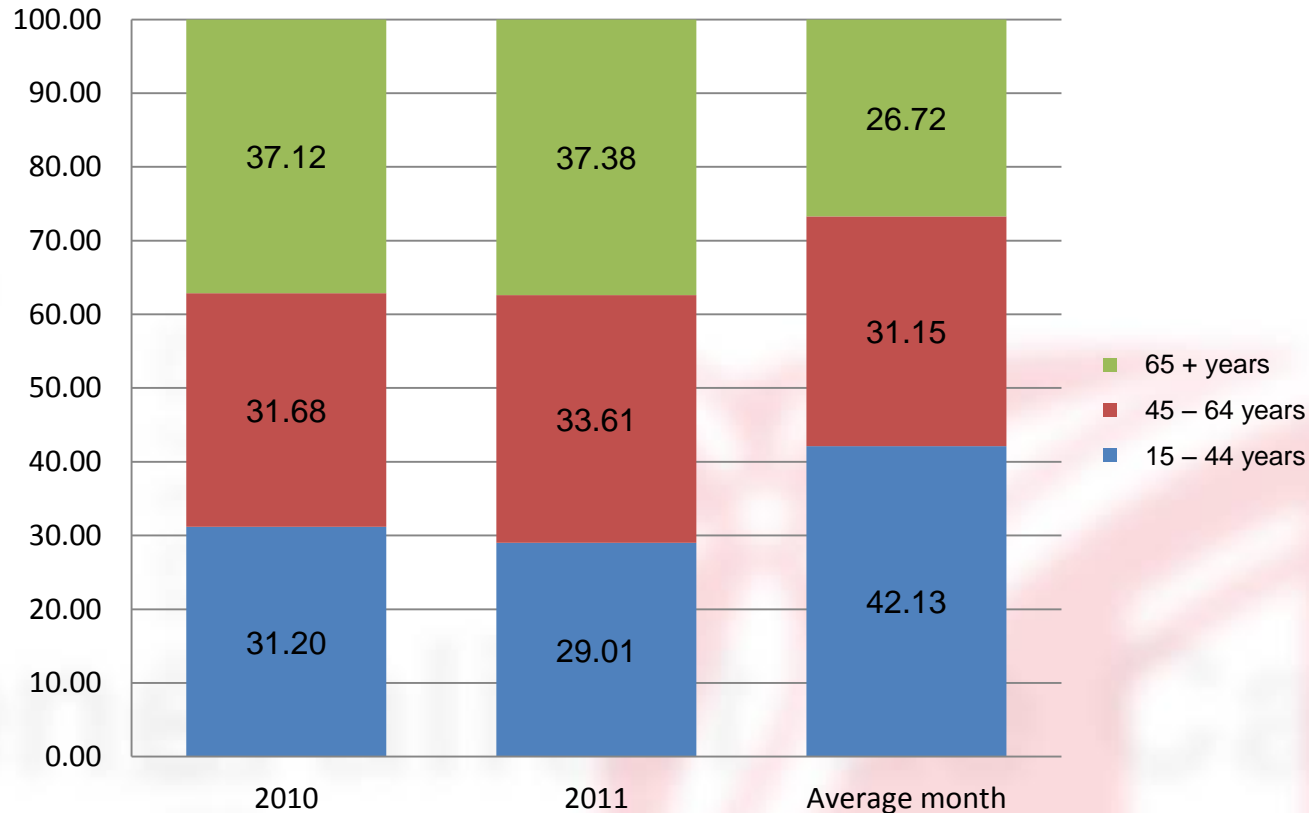
The distribution of participating centers (rural/urban) was not different of the distribution of non-participating centres.

# Total of patients screened by age group and sex

Age group	2010		2011	
	Women (%)	Men (%)	Women (%)	Men (%)
15 – 44 years	258 (35.8)	195 (30,4)	339 (33.2)	222 (24.3)
45 – 64 years	255 (35.4)	205 (31,9)	332 (32.5)	318 (34.9)
65 + years	297 (28.7)	242 (37,7)	351 (34.3)	372 (40.1)
<b>Total</b>	<b>810 (55.7)</b>	<b>642 (44.3)</b>	<b>1022 (52.8)</b>	<b>912 (47.2)</b>
	<b>1452 (100)</b>		<b>1934 (100)</b>	

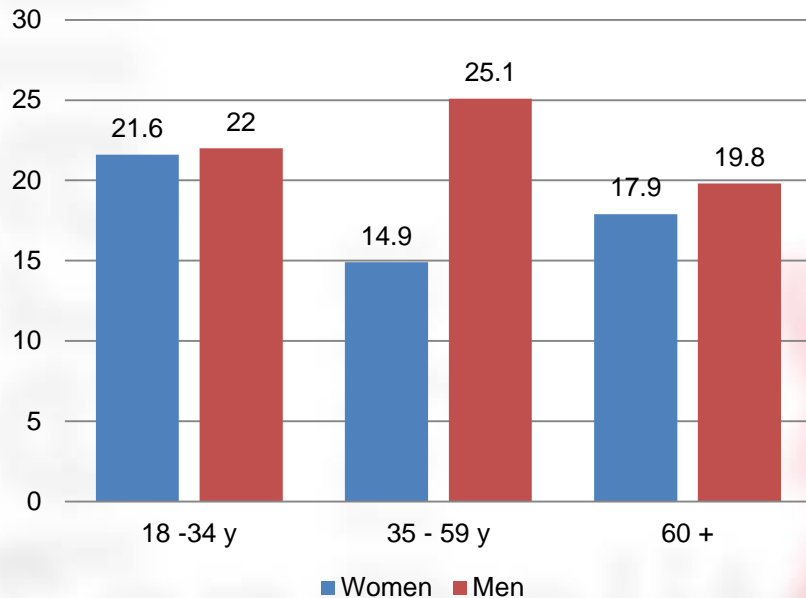
The number of patients screened increase year by year, the number of women is higher and there is a similar distribution among age groups.

# Patients screened by age group versus average month visits

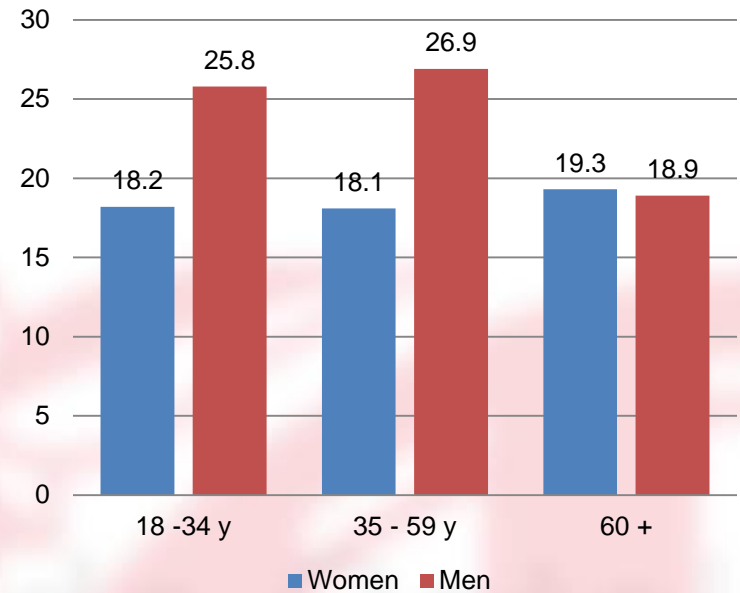


Compared with the distribution of age-groups of the average visits by month, there has been a higher proportion of patients aged 65+ screened.

# Alcohol consumption risk (AUDIT-C)



**2010**

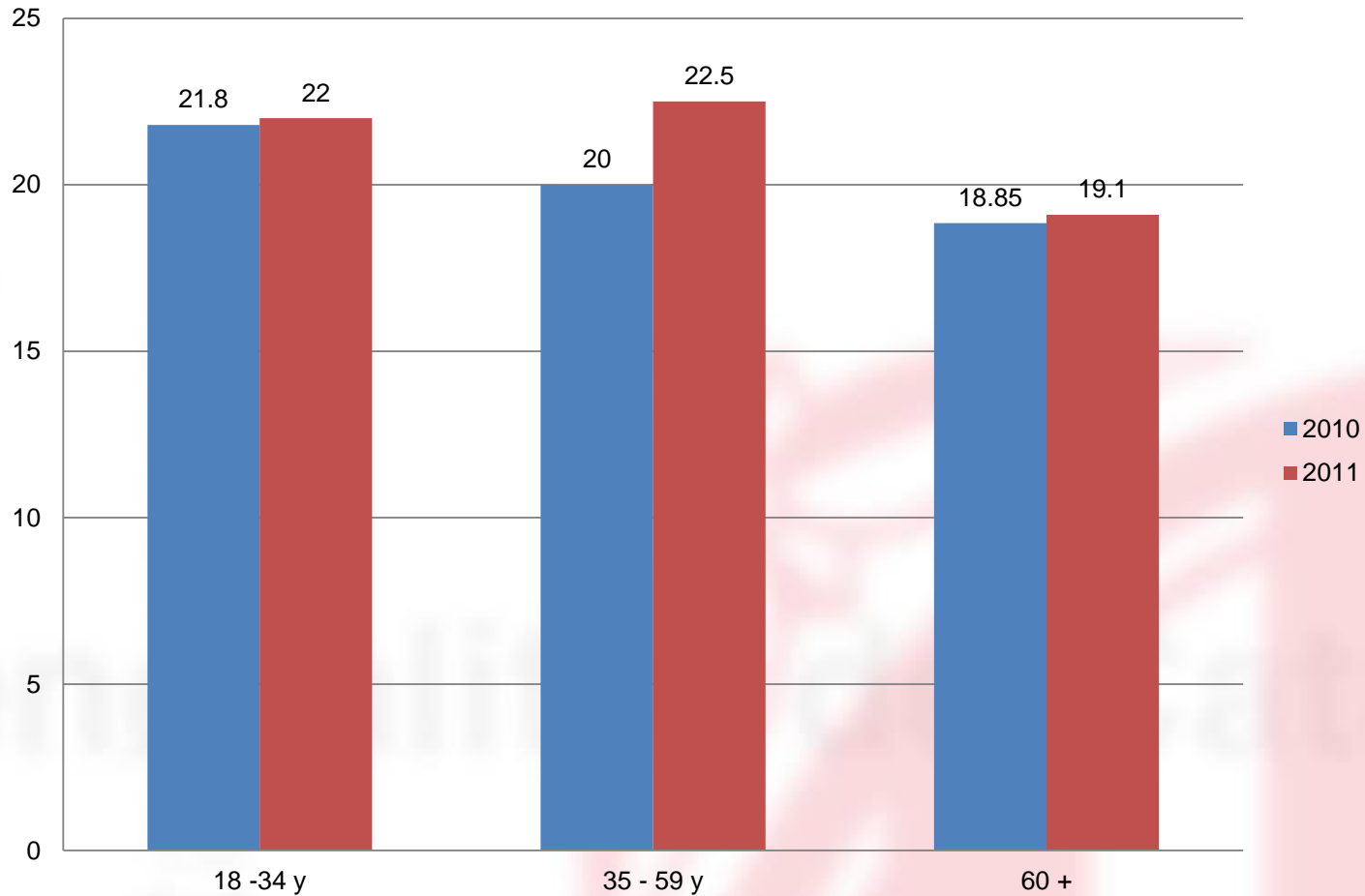


**2011**

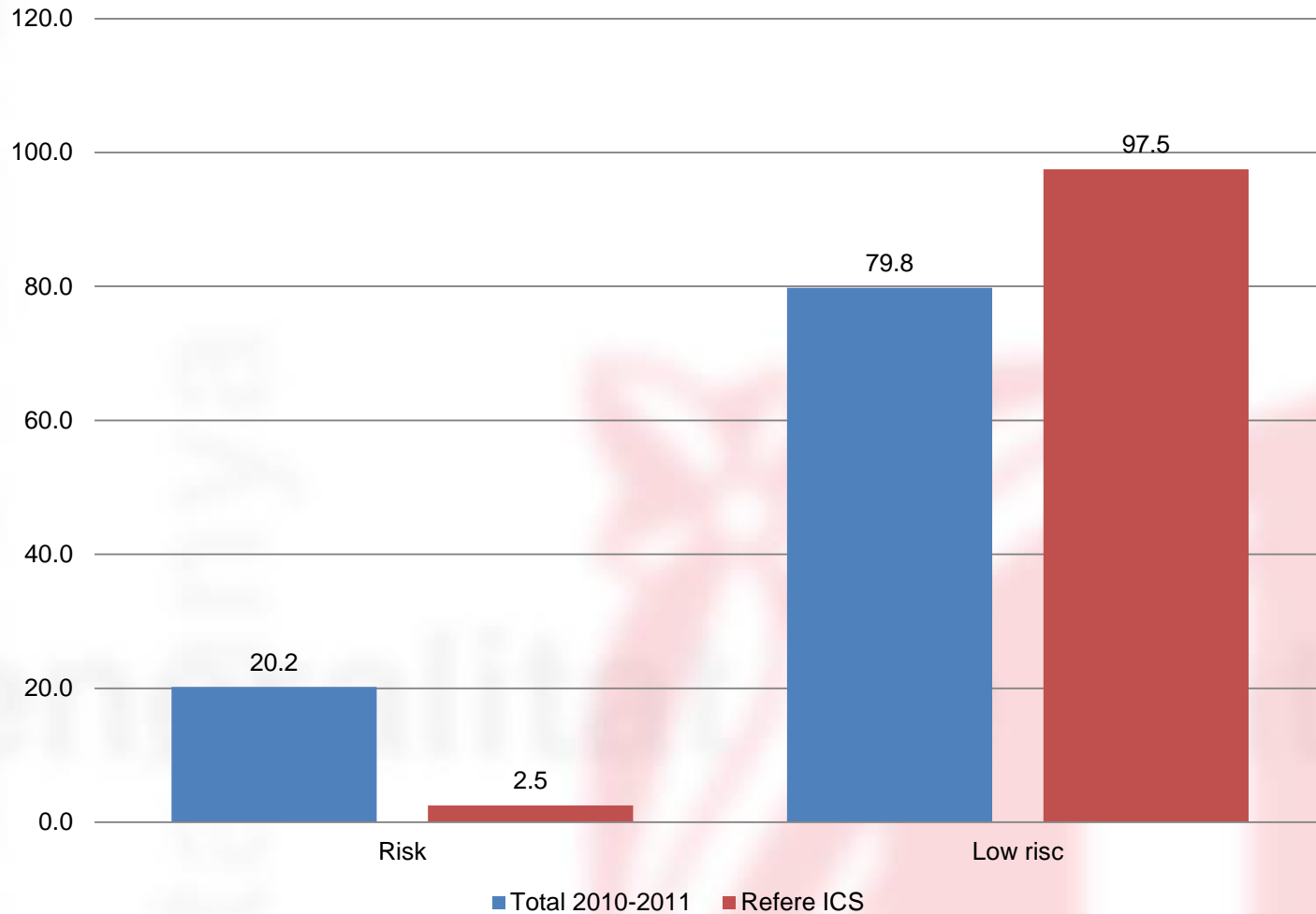
Similar prevalences year by year but always higher proportion of risky drinkers among males 35-59.



# Alcohol consumption risk (AUDIT-C)



# Identification with standardized tools versus current medical record tools



8 times higher with standardized tools

# Conclusions

Besides low participation, the alcohol screening day in Catalonia showed the feasibility of using standardized instruments in PHC.

The prevalence of risky drinkers with AUDIT is 8 times higher than the prevalence identified in the medical record.

The screening day in Catalonia increases the public and professionals' awareness on alcohol problems and facilitates its early identification.

Participation increases year by year and we would like to extend it to all PHC centres in Catalonia.

Including the AUDIT tool as a standard EI tool in the medical record of Catalonia is a future challenge.

# Acknowledgements

**ABS Sils-Vidreres-Maçanet-Riudarenes**  
**ABS Badalona 2, Centre**  
**ABS Sant Feliu de Llobregat 1, El Pla**  
**ABS Badalona 4, El Gorg**  
**ABS La Jonquera**  
**ABS Roses**  
**ABS Manlleu**  
**ABS Arbúcies-St. Hilari**  
**ABS Terrassa B, Terrassa Est**  
**ABS El Prat de Llobregat 2, 17 de setembre**  
**ABS Olot**  
**ABS Badalona 1, Martí i Julià**  
**ABS Terrassa G, Terrassa Sud, Can Jofresa**  
**ABS Manresa 2, Plaça Catalunya**  
**ABS Manresa 3, Les Bases de Manresa**  
**ABS Calaf**  
**ABS Terrassa A, Sant Llàtzer**  
**ABS Salt-2**  
**ABS Baix Penedès Interior (L'Arboç)**  
**ABS Barcelona 10-F, Camp de l'Arpa (CAP Maragall)**

**ABS Salt**  
**ABS Barcelona 10-D, Besòs**  
**ABS Sant Feliu de Guíxols**  
**ABS Molins de Rei**  
**ABS Girona 3, Montilivi-Vila-roja**  
**ABS Reus 1, Sant Pere**  
**ABS Girona 4, Taialà (Joan Vilaplana)**  
**ABS Lleida Rural Sud**  
**ABS Barcelona 10-G, El Clot**  
**ABS Tarragona 4 (Complex Llevant)**  
**ABS Sabadell 4-B, Can Rull**  
**ABS Almenar-Alfarràs-Alguaire**  
**ABS Amposta**  
**ABS Sant Boi de Llobregat 3, Camps Blancs**  
**ABS Barcelona 9-G, Sant Andreu Est**  
**ABS Sant Vicenç dels Horts 2-El Serral**  
**ABS Vilaseca**  
**ABS L'Hospitalet de Llobregat 3, Collblanc**  
**ABS Cassà de la Selva**  
**ABS Cardona**