



Finnish Institute of  
Occupational Health

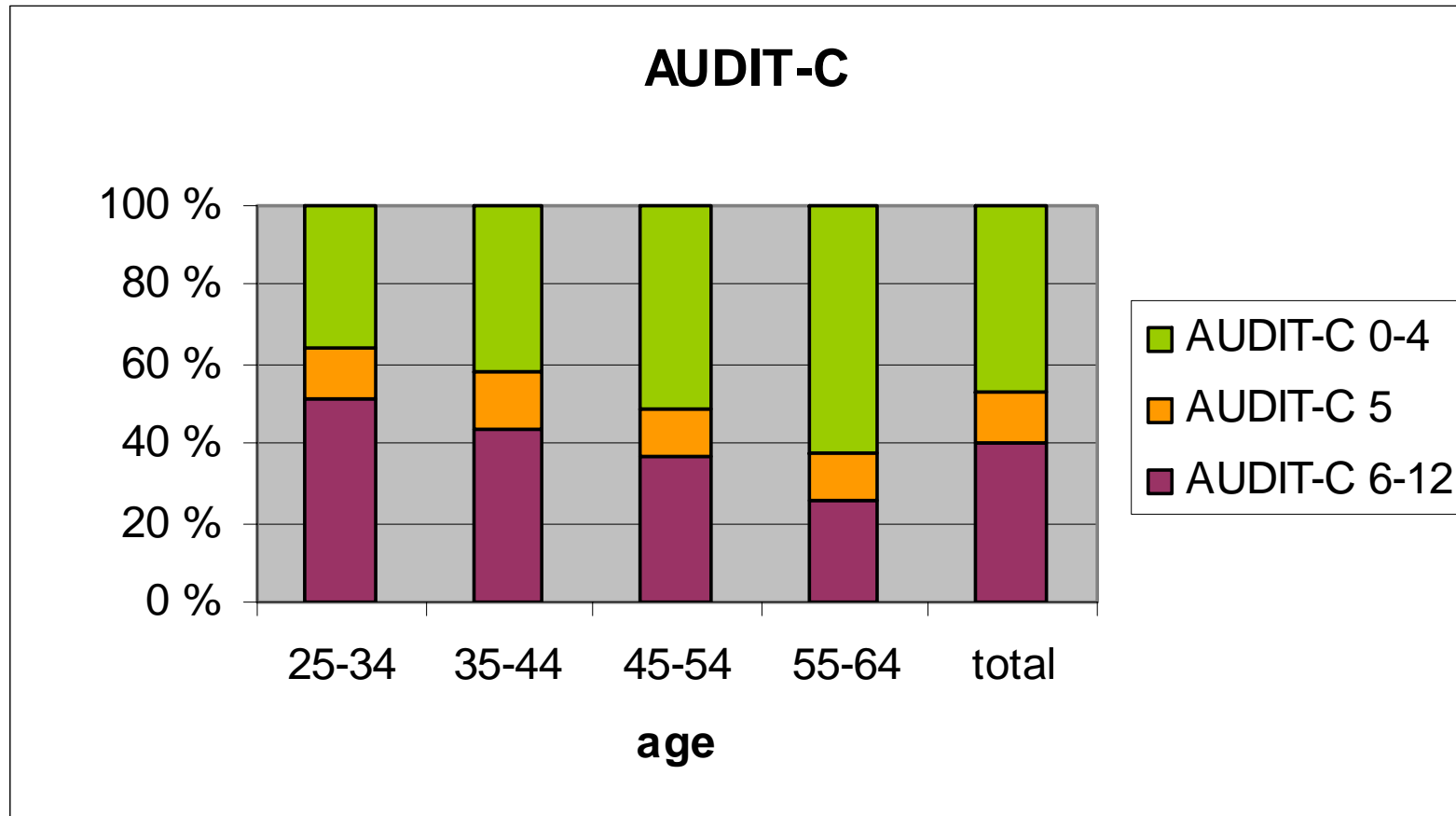
# Agreed Practices in Screening and Brief Alcohol Intervention in Finnish Occupational Health Services

Leena Heljälä, 19 November 2007

INEBRIA Conference, Brussels, Belgium

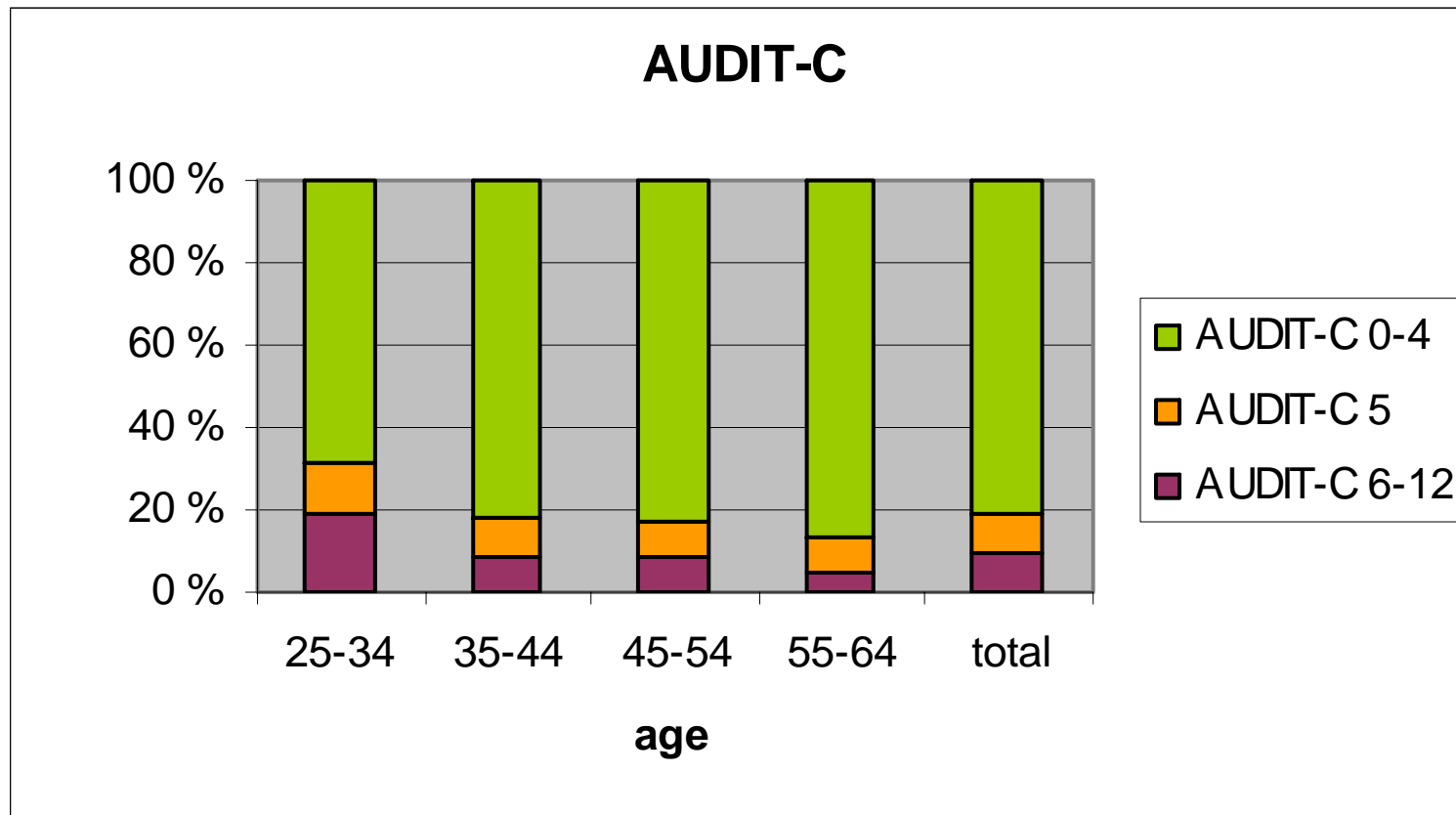
# Alcohol use, working men

(Work and Health in Finland 2006, FIOH)



# Alcohol use, working women

(Work and Health in Finland 2006, FIOH)



# Introduction

- 40% of male and 10% of female workers were heavy drinkers (AUDIT C score 6–12) (Work and Health in Finland 2006, FIOH)
- Alcohol-related diseases and deaths among men and women of working age (15-64 years) continued to increase in 2005
- Occupational Health Services (OHS) have a crucial role in reducing alcohol-related harm with early identification and brief intervention

## Objective

To examine the agreed practices  
in screening and brief intervention  
in Finnish OHS

# Research questions

Questions to occupational health (OH) units:

1. Have you discussed the brief intervention practices in your unit?
2. Have you agreed on common screening and brief intervention (SBI) practices?

# Methods

- A questionnaire was sent to 350 OHS units in 2006
- The random sample by area was representative of all Finnish OHS units

# Results

- Response rate was 58% (204 OHS units)
- 84% of the OHS units had discussed SBI practices
- 38% of the units had a written agreement of SBI practices



## Agreements on SBI practices

	Oral agreement %	Written agreement %
Asking about alcohol use	57	33
Use of AUDIT	44	38
Registering patients' usage of alcohol	48	24
Follow-up	50	17
Offering written counselling material	29-33	3-5

## Conclusions

- Practices of screening and brief alcohol intervention had been discussed in most of the OHS units
- There were usually no written guidelines to support physicians and nurses in their brief intervention practices and increase implementation
- 42% of OHS units did not respond to the questionnaire, and it is likely that these units are less active in SBI than the units that participated in the query
- More information about the practices of individual doctors and nurses will be available soon

# Questions

- How should SBI be managed at unit level?
- How should SBI practices be agreed, monitored, evaluated, and developed at the unit level?
- Should training be organized regularly?
- Who should be responsible for preventive work at unit level?