

# The 2005 NIAAA Clinicians Guide: Development & Implementation in a Continuum of Care

---

**Mark L. Willenbring, M.D.**

National Institute on Alcohol Abuse & Alcoholism

National Institutes of Health

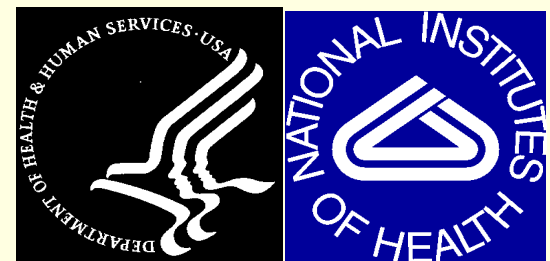
Dept. of Health & Human Services

Rockville, MD, USA

*Presented at INEBRIA Meeting,*

*Münster, Germany*

*September 16, 2005*





# Why revise: Goals of 2005 Guide

---

- Simplify screening
- Address realities of clinical practice
  - Anticipate actual use & clinical flow
  - Incorporate clinical assessment
  - Referral often not effective option
- Add information about medications
- Add disease management



# Timetable for Development

---

- July 2004: Decision to revise
- August 2004-March 2005
  - Review of relevant research
  - Internal development
  - Collaboration between scientific, design & printing, and dissemination staff
- April 2005: Internal & external review
- July 2005: Final approval and printing



# Review of scientific evidence

---

- Studies & meta-analyses of SBI
- Analyses of 3 databases
  - NESARC
  - 2000 National Alcohol Survey (T. Greenfield)
  - MATCH database (R. Cisler)



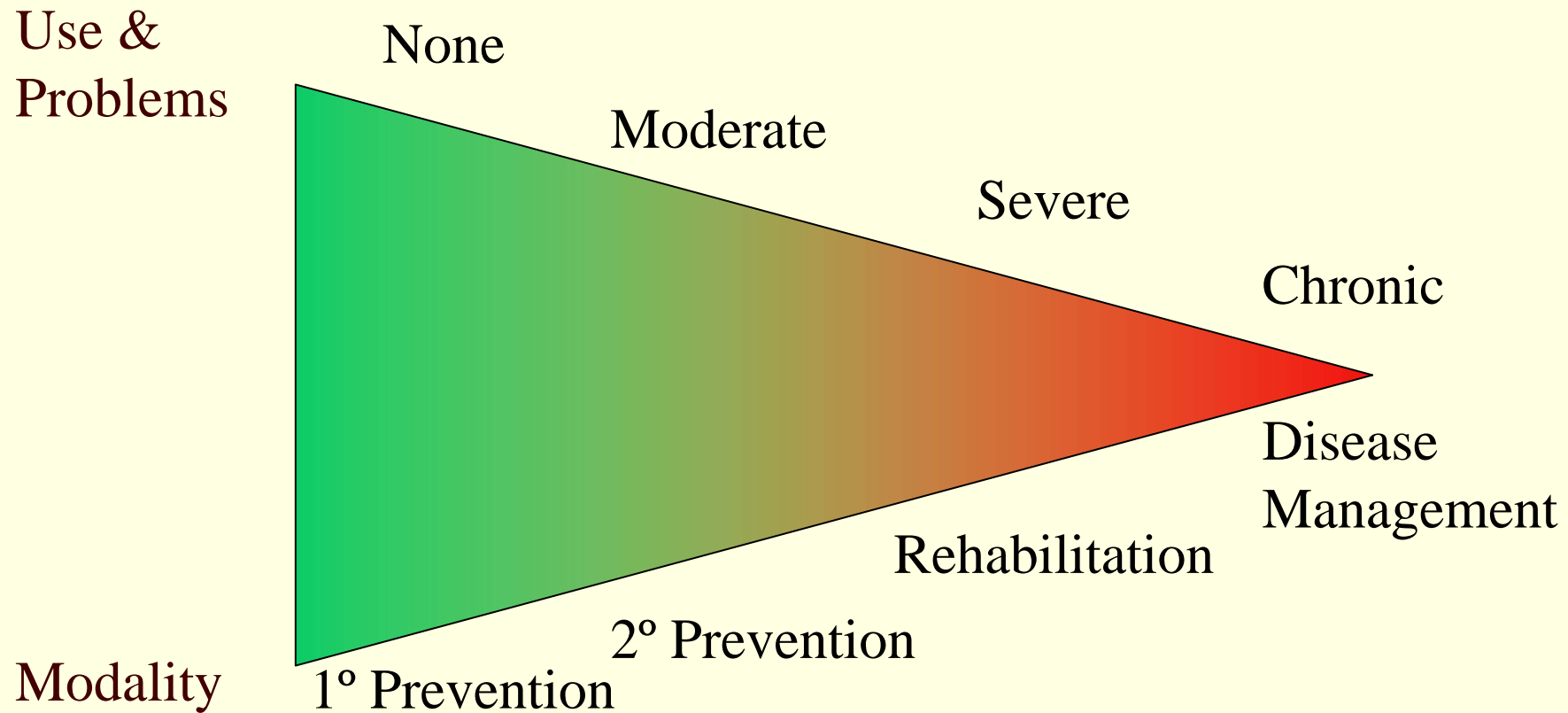
# General framework: Five A's

---

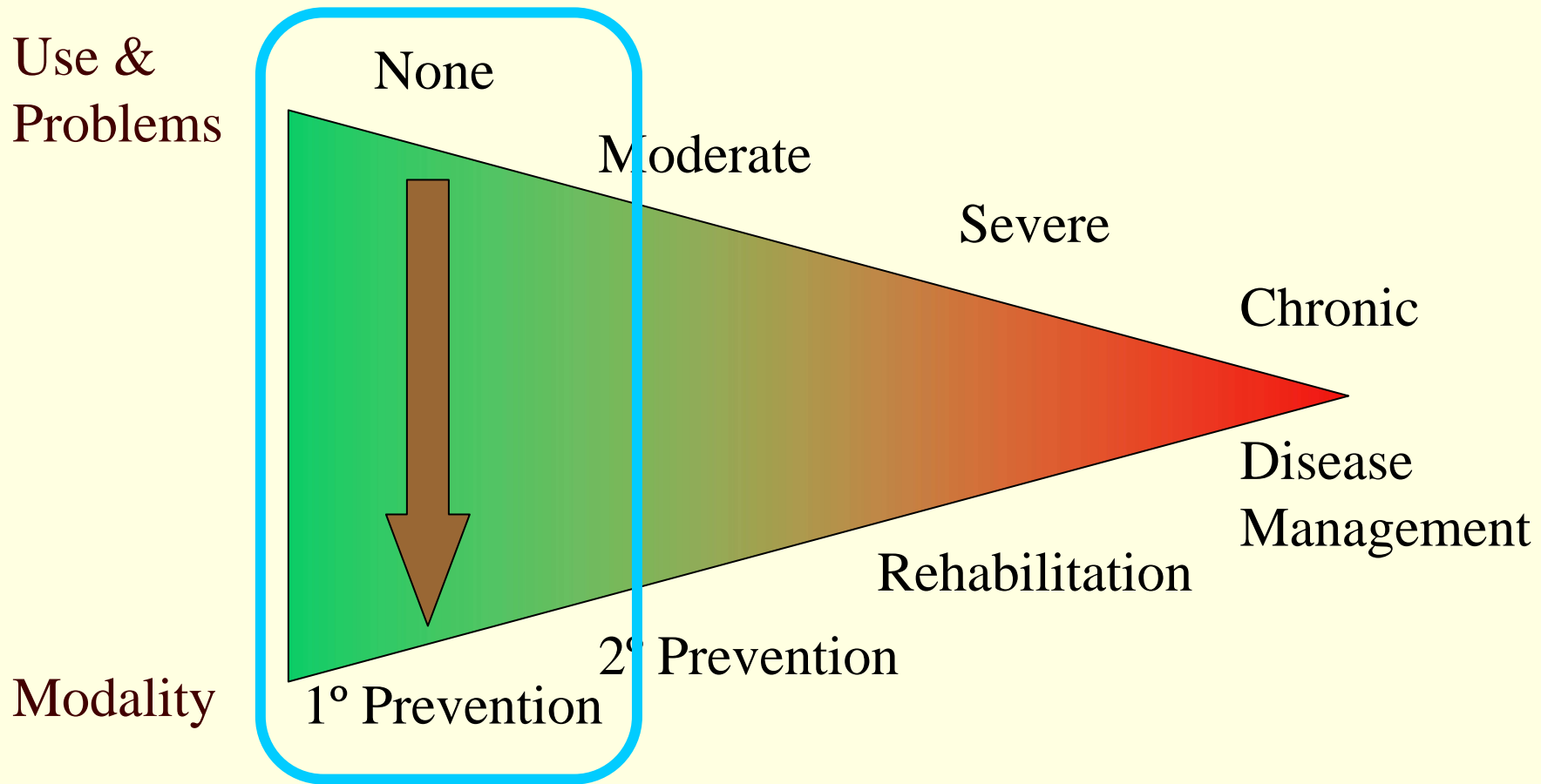
- Ask
- Assess
- Advise
- Assist & Arrange
- Familiar, promoted by USPTF, used in smoking cessation

# Context: A Continuum of Care

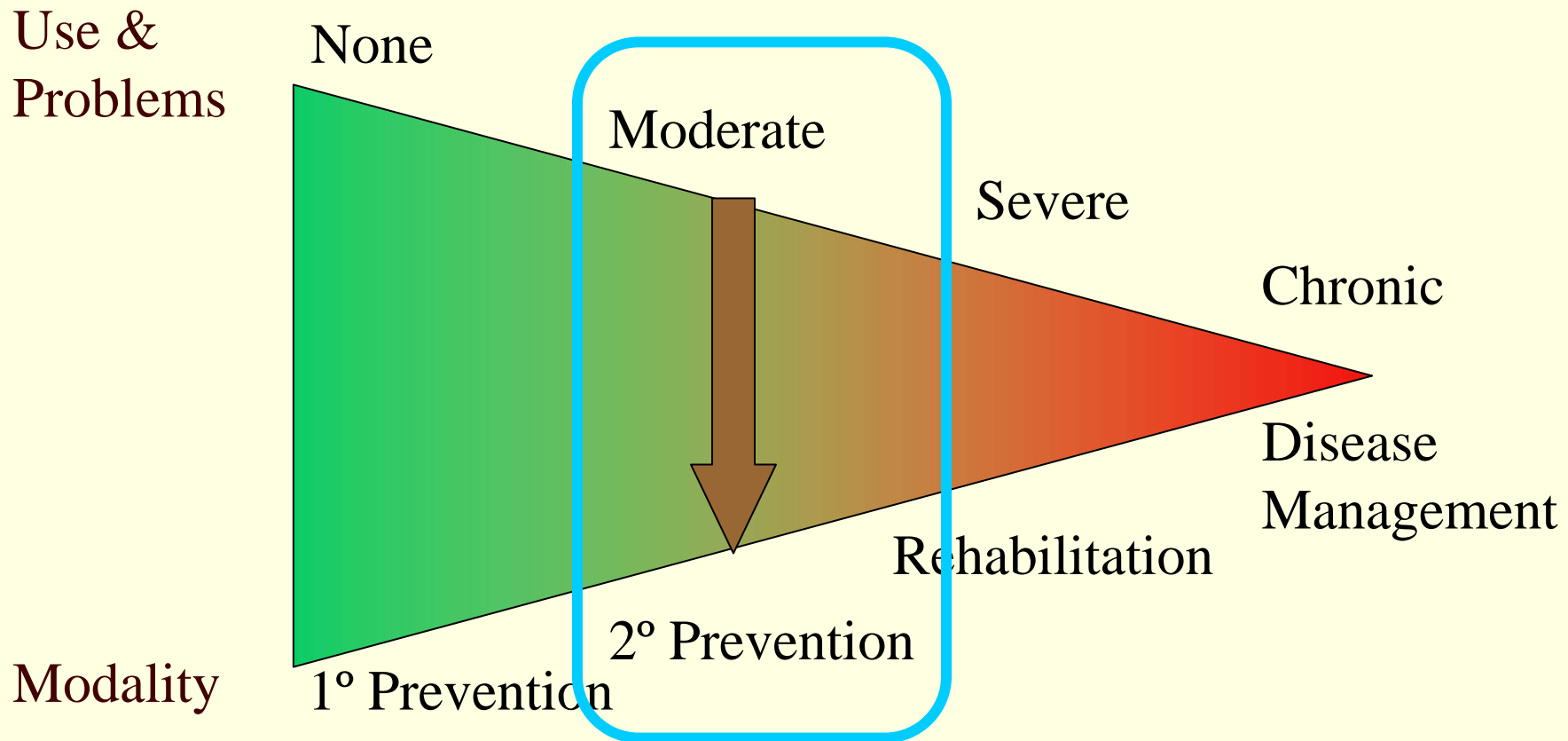
---



# Continuum of Care for SUDs

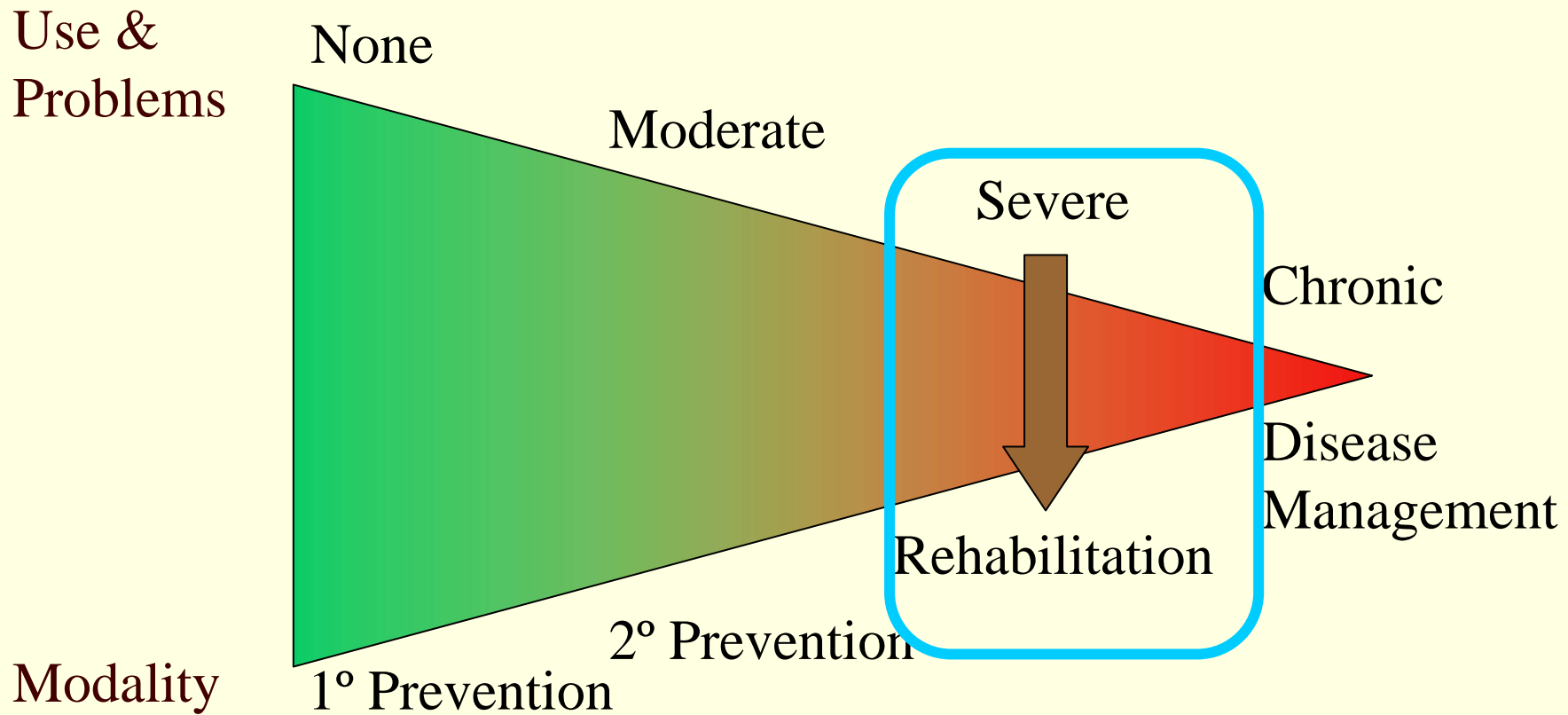


# Continuum of Care for SUDs

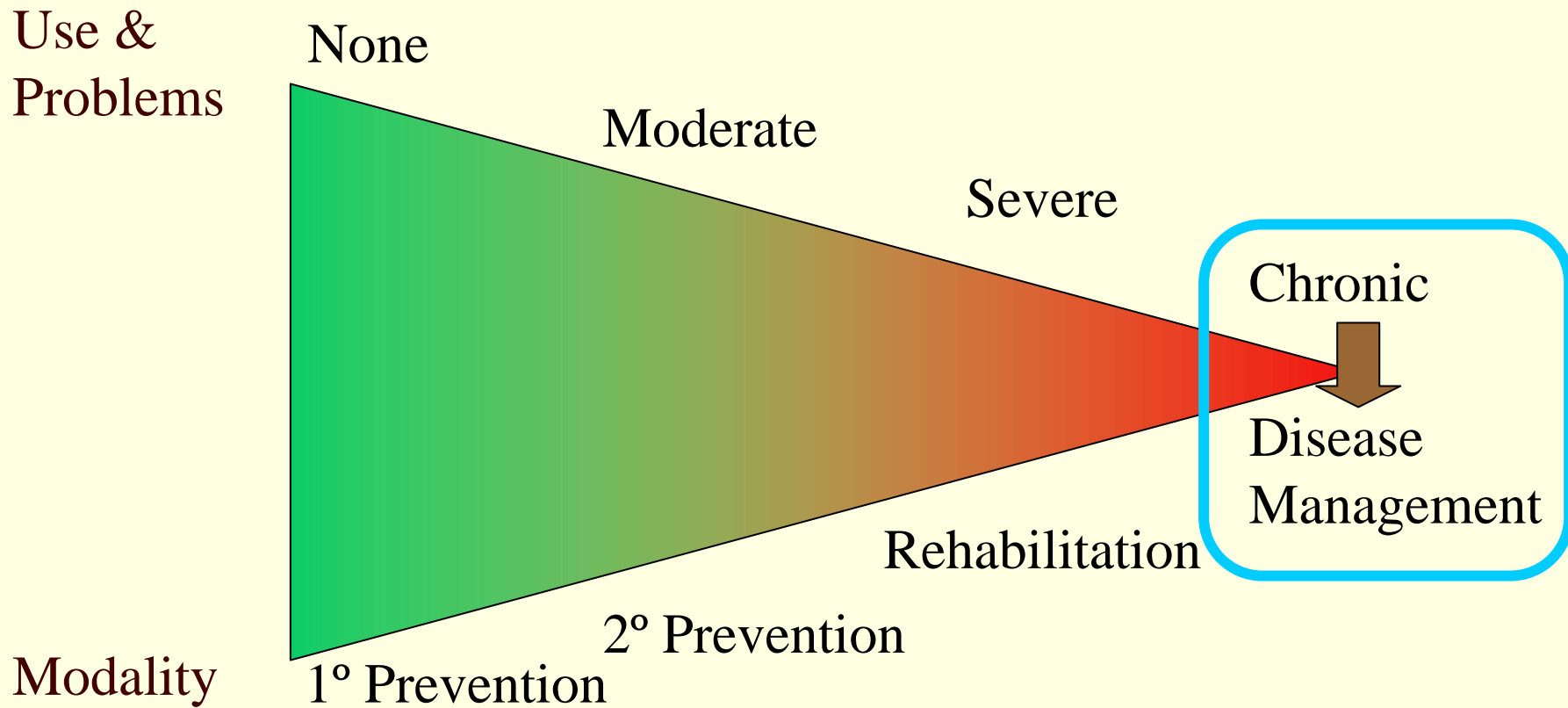




# Continuum of Care for SUDs



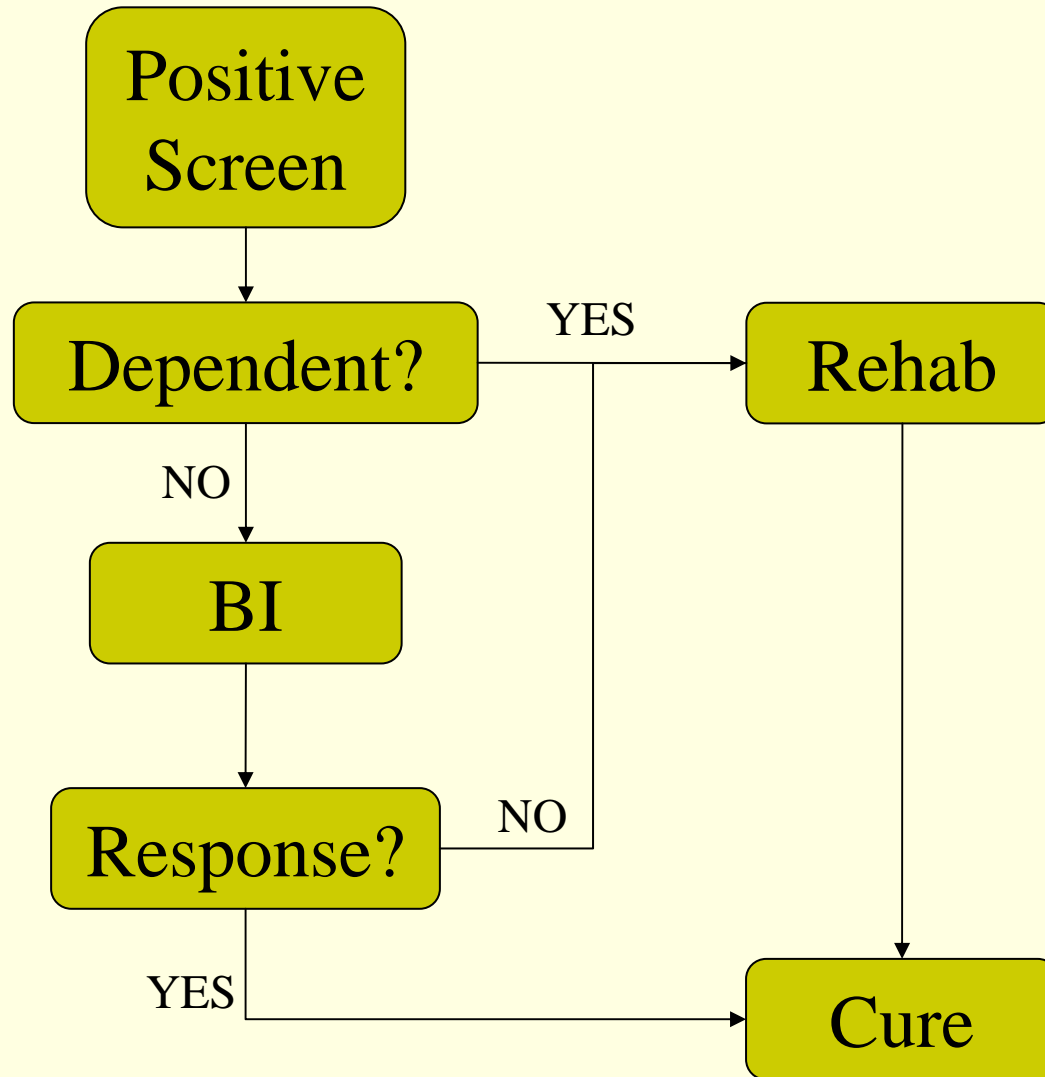
# Continuum of Care for SUDs



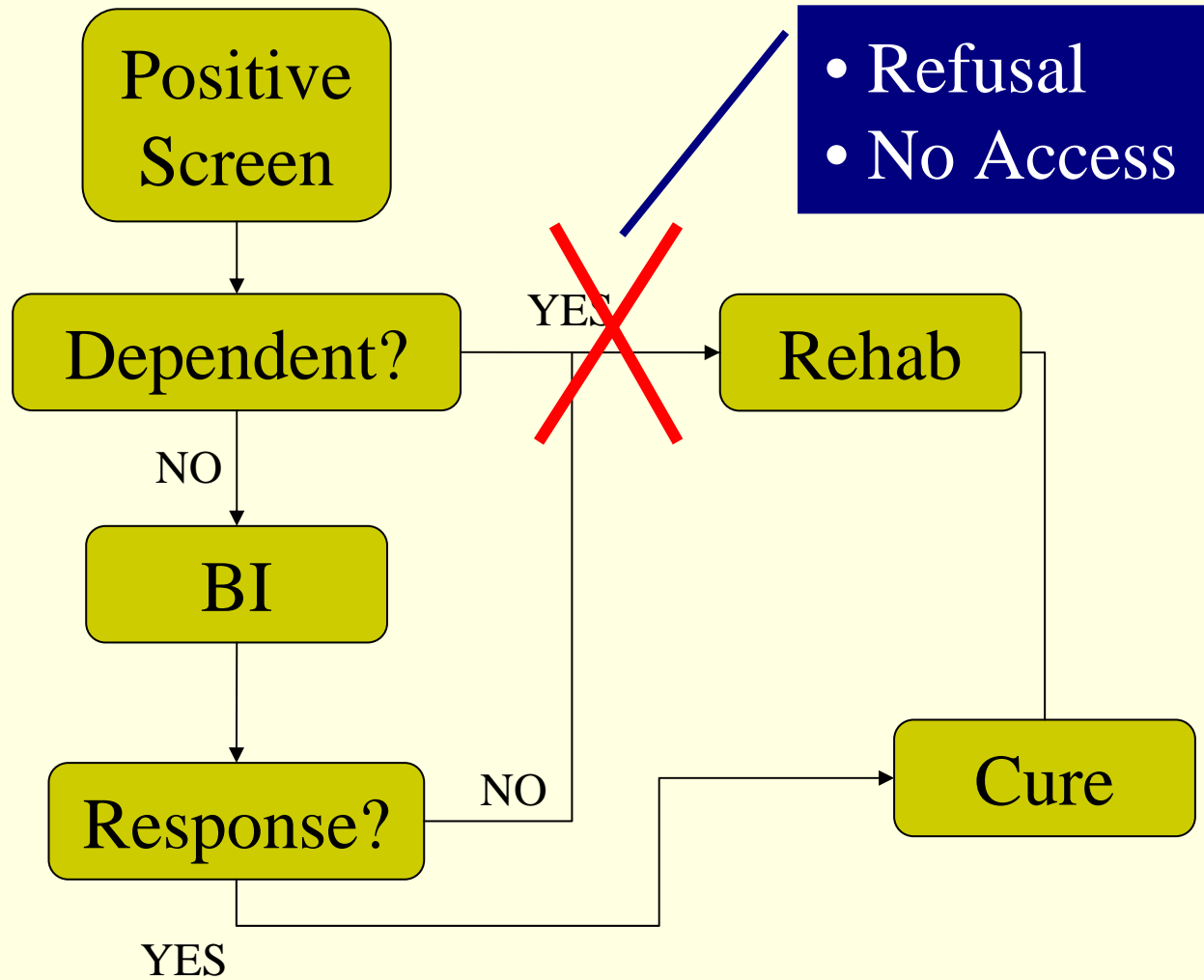
Context: What is the role for general medical and psychiatric clinicians in treating alcohol dependence?

---

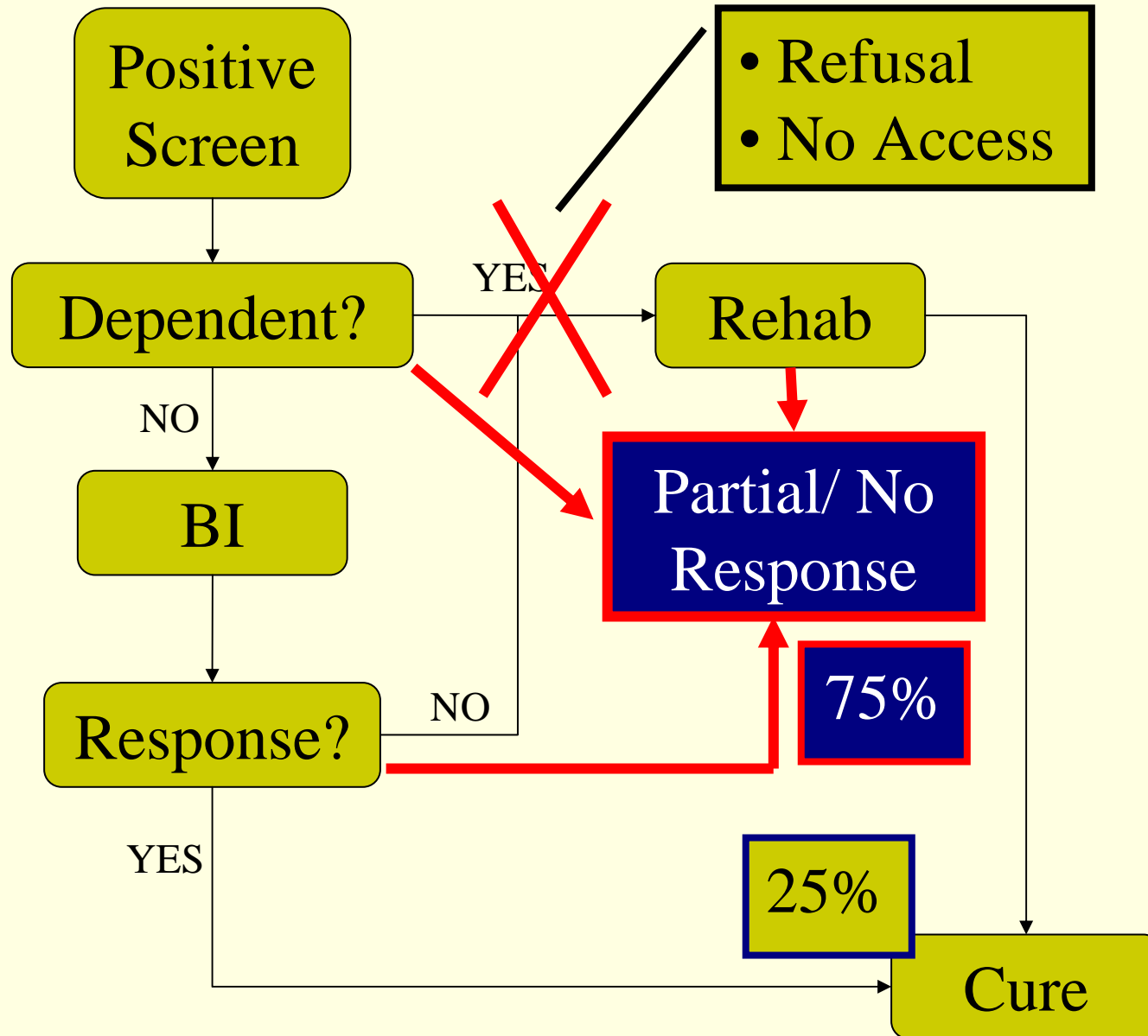
# Ideal



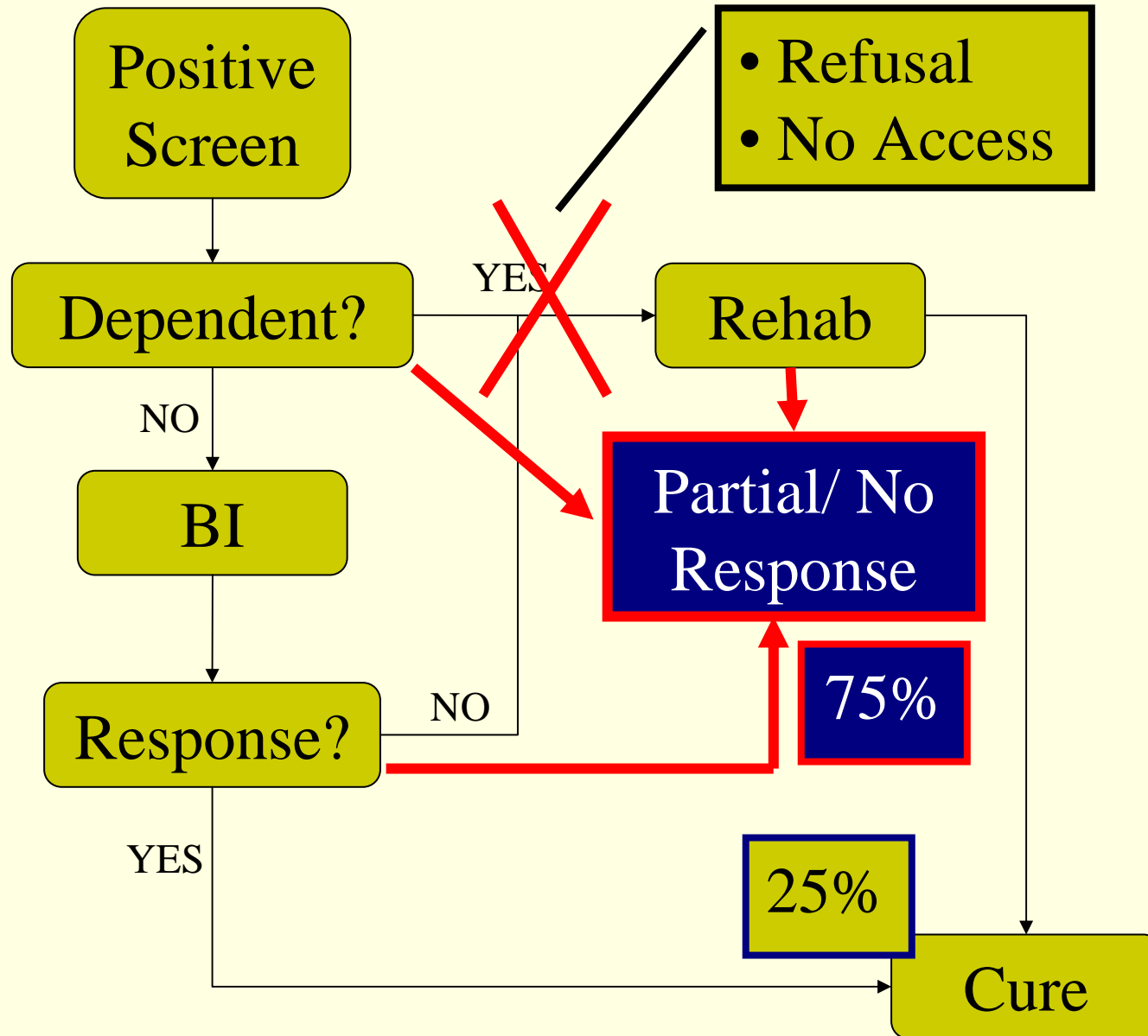
# Real



# Real



# Real





# Contextual Conclusions

---

- Must address alcohol dependence in non-specialty settings
  - Chronic cases with co-morbidity
  - Patient preferences
  - Inadequate specialty care systems
  - Natural history of disorder
- (Future) Must develop new relationship between specialty & non-specialty settings



# Helping Patients Who Drink Too Much



**A CLINICIAN'S GUIDE**

2005 Edition

U.S. DEPARTMENT OF HEALTH & HUMAN SERVICES  
National Institutes of Health  
National Institute on Alcohol Abuse and Alcoholism



# Planned products

---

- ❑ PowerPoint slide presentation with narration for education of health professionals
- ❑ On-line continuing education credit offered in collaboration with professional associations
- ❑ DVD with clinical examples
- ❑ Spanish translation
- ❑ 1-2 page supplements for special populations
- ❑ Continually updated guide



# Evaluation

---

- ❑ Tracking orders, website hits, downloads
- ❑ Working with large HCOs who wish to implement
- ❑ Administrative supplements to existing grant applications for pilot projects
- ❑ Encouraging research & grant applications
- ❑ Potential for other funding mechanisms



# Questions

---

- Universal vs. high-risk screening
- Best way to deal with alcohol dependence?
- Population Subgroups : women, minorities
- Primary & secondary prevention earlier in life  
(children & adolescents)



# Questions

---

- ❑ Organizational change strategies
- ❑ Strategies to achieve policy-maker buy-in
- ❑ Population strategies and role of medical providers in an overall public health strategy



# Contact information

---

- Guide is available at  
<http://www.niaaa.nih.gov/publications/Practitioner/guide.pdf>
- Can be ordered in print form or downloaded
- Public domain (no copyright), so use is unlimited  
(attribution is appreciated)
- Mark L. Willenbring, MD  
[mlw@niaaa.nih.gov](mailto:mlw@niaaa.nih.gov)  
+1-301-443-1208
- NIAAA website: [www.niaaa.nih.gov](http://www.niaaa.nih.gov)

Thank you